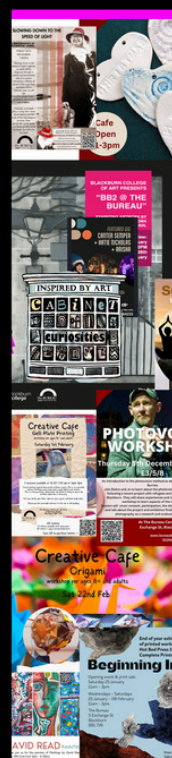


The Bureau Centre for the Arts

10th Year Anniversary

Sponsorship Opportunities 2025



2015-2025

Ten years, three buildings, one community

The BUREAU
Centre for the Arts

www.bureaublackburn.co.uk

Our Vision and Mission



Our vision is to be a catalyst for positive change through creativity, community and connection from the grassroots up.

Our mission is to create a safe space for arts and culture in Blackburn which provides accessible opportunities for artists, participants and audiences and supports a vibrant and diverse creative community.

We will offer a broad range of opportunities for people to engage in arts and culture, which is innovative, relevant to contemporary issues and to our surrounding communities.

We will support the existing creative community, welcome new collaborators and support people to reach their full potential.



About us

The Bureau Centre for the Arts is a grass roots community arts centre. We offer a wide range of arts and creative engagement programmes, activities, events and performances for people of all ages and backgrounds from Blackburn and the surrounding areas.

Over the past TEN years we have played an active role in the artistic and cultural life of Blackburn and Pennine Lancashire.



We are a place for people from the different & diverse communities of Blackburn (particularly those who historically face barriers to participation) to experience, share and create art and culture.





The team are passionate about affecting change within the borough in terms of the arts available to people, people's perceptions of what the arts are for, and the benefits gained by their engagement.



We are experienced socially engaged artists, educators and producers who work alongside other freelance artists and facilitators and an active team of local volunteers and work experience students.



We are an arts and cultural venue which is run by, with and for our local community.



We hold exhibitions of local and emerging artists' work...

... and host theatre, poetry and music performances.



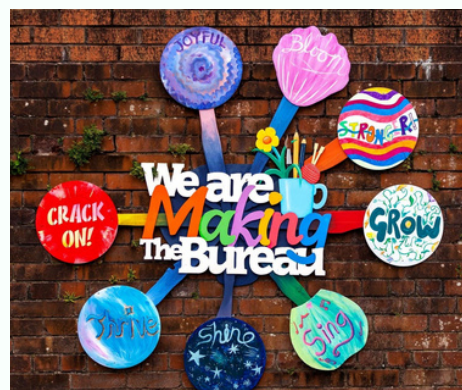
We are home to Blackburn Festival of Light...



...and we also have studio, workshop and meeting spaces to hire.

We are:

...a place to meet...



...a place to connect...

...a place to volunteer...



...a place to learn...



...a place to experiment...



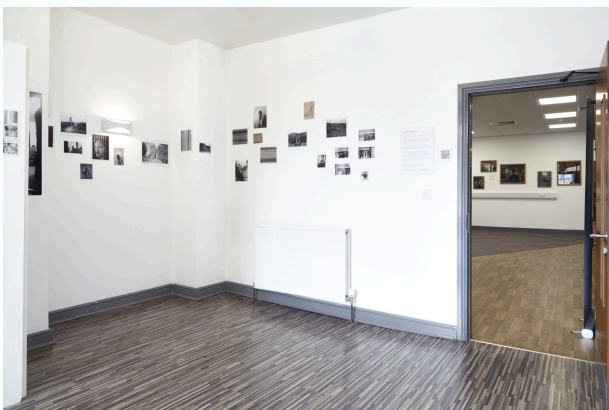
...a place to perform...



...a place to shine...



...a place to exhibit...



...a place to make a difference!

"The Bureau is very important to me as I live on my own. The people are great and it's warm and welcoming. I suffer from mental health problems and it's great to chat to people and have a laugh. I have made some great friends here and I'd be totally lost without The Bureau."

"Inspired By Art has been a godsend for me. I was really struggling with my mental health before I found I.B.A. but since I have been coming here, my outlook has been much brighter. I've found myself more confident in everything I do, It has led me to find some voluntary work which I am also enjoying and getting some positiveness out of. I would like to say a massive thanks to Kerris and Simon, they have been amazing in filling me with confidence and joy. ABSOLUTELY FANTASTIC!"

The Bureau is a place of magic, where extraordinary creative things happen and everyone is welcome. We need The Bureau in every town and city in the world!

The Bureau has been a huge part of my life for a few years now.. I have both been a volunteer and a member of the public here, and either way, it is a place where you can go and feel like you are a part of the family

Part of the reason I have stayed loyal to the Bureau is because their values and beliefs align with my own, and they are now extended family for me. I have always received genuine love and support when I have needed it, and it is one of my safe places to go. If the Bureau no longer existed, many people will feel lost, including myself. My self-confidence, self-esteem, self-image, and mental health have all improved since being a part of the Bureau community.



The Bureau is a truly special place in the community. The whole team are kind and friendly, and they run a variety of sessions. The workshops and groups have introduced me to new skills and helped me build creative confidence. The sessions attract a wonderful mix of people, and they've been a great opportunity to make new friends. I also love the exhibitions that are put on regularly, and I've had the chance to showcase some of my own work—something I had never done before joining The Bureau. It's more than just an arts centre—it's a creative, welcoming hub that brings people together in meaningful ways.

It's always a pleasure to work alongside The Bureau, the place is a creative hub in the town centre to be treasured, always welcoming & friendly, an inclusive environment which I & many others I know enjoy spending time in.

The team are always open to new ideas & supportive of local creative talent, the space always feels accepting & diverse. Having grown up in Blackburn I could have only wished for such a place & hope others continue to animate it for years to come.

"Learning creative skills and feeling part of a community is incredibly good for mental health and overall wellbeing. The Bureau provides a safe space for people to come and find new ways of expressing and learning about themselves, finding their creative voice and giving them meaning and purpose.

In an increasingly isolating world, this is a place where people can find friendship, warmth, safety and self expression.

This is a unique and rare resource that should be nurtured and treasured by community, educators and our local council. It is run by people who believe in the power of art, music, poetry and theatre to transform lives and their dedication to this as a vocation is something that we should all be grateful for."



Help support the positive work we do as we move into our 10 year anniversary year.

Sponsorship Opportunities:

Support our **accessibility scheme (bursary)** and help us enable people to participate in arts opportunities, e.g theatre & performing art performances, art classes, music sessions etc.

£100 - £500 (5 - 25 places)

Support 'Public Living Rooms', a social community session

£500 - £1000 (5-10 sessions)

Sponsor an **Exhibition** or an **Open Day Event** such as Fun Palaces

£1000 - £5000

Support community art groups such as '**Creative Cafe**' to enable us to run relaxed, social, creative well-being sessions or '**Inspired by Art**' group, a weekly creative session that supports adults recovering from health & mental health issues

£1000 - £5000 (6 - 30 workshops)

We don't have core funding. Most funding that we secure is project funding. Sponsoring our core costs will help us pay our ever increasing overheads so that we are able to keep the building open and continue having positive impacts on peoples' lives.

Any amount is welcomed

Sponsorship Benefits:

- fulfill your corporate social responsibility
- **under £500** - a public thank you on social media, invite to events
- **£500 & over** - all the above & your logo on the supporters page of our website
- sponsorship's of **£5000+** will receive all of the above & a plaque of thanks in our entrance area

*Please note that we are an organisation that have strong ethical principles. Unfortunately we are unable to accept donations from organisations that support the manufacture or transfer of arms to oppressive regimes, and organisations that infringe animal welfare standards.

If you would like to make a donation or find out any further information please email us at info@bureaublackburn.co.uk



TEN other ways to support us!

- Pick up a loyalty card for our cafe and get your **TENth** coffee free!
- Join our Friends of The Bureau scheme and donate **£TEN** a month
- Buy tickets for **TEN** of our music, theatre or spoken word events
- Recommend us to **TEN** friends (Word of Mouth is our best publicity)
- Learn **TEN** new skills by at**TEN**ding our Creative Cafe workshops
- Repost **TEN** of our posts on social media and tag **TEN** friends
- Buy **TEN** lovely artist made gift or cards from our mini shop
- Volunteer **TEN** hours of your time to help us with your skillset or by attending our Community Consultation meetings
- Become an Advocate for us and tell **TEN** people, businesses or organisations about how good we are
- Sponsor **TEN** bursary places or sessions (any amount is appreciated!)



Come in and see us and have a chat about how you can be involved

**Our public opening hours are
Thurs 10am-3pm and 5-7pm
Fri 11am-3pm
Sat 10 am-3pm**

Other times by arrangement Wed-Sat

**Find us at The Lewis Building,
5 Exchange St,
Blackburn,
BB17JN**

Call us on 01254 664215 or email info@bureaublackburn.co.uk

**www.bureaublackburn.co.uk
Facebook/TheBureauBlackburn
Insta @BureauBlackburn**



Supported using public funding by
**ARTS COUNCIL
ENGLAND**



Supported using public funding by
**ARTS COUNCIL
ENGLAND**

